

Deia Instruction Manual

6729 TheHot&Cold

21.10.15

Print Production

Pantone (2) Colors

Rest of the colors are CMYK



Pantone 533C



Pantone 10148C

Printer Notes

- White Matte Coated Cardstock
- Bleed
- Double sided
- Accordion Fold

— = Indicates fold

WAYS TO USE



TEASE

Turn the temperature to cold and run the tip of the device along your or your partner's breasts focusing on the nipples to increase arousal.



EXPERIMENT

Explore the 10 vibration settings to create a variety of unique sensations for both external and internal stimulation.



GET THERE

Slide the head into your or your partner's vagina and tilt the g-spot massager handle down to apply direct pressure on the g-spot. Gently rock the g-spot massager back and forth to stimulate the area.

CLEANING:

Be sure to clean thoroughly before and after each use. Clean using mild soap and warm water.

STORAGE:

Store in a cool, dry place separately from other sexual wellness devices; devices of different material can damage each other if left in contact.

QUALITY:

This product is manufactured using body-safe silicone that is harmless to the human body; free from phthalates, BPA and latex. Use water-based lubricant only.

CHARGING:

Do not turn on while charging and/or cleaning. While charging, the LED light on the device will pulsate slowly and turn solid when fully charged. Use only with 5-volt USB wall adapter (standard mobile phone charger).

Low battery alert: Light on device flashes rapidly when battery is running low. Allow 180 minutes for a full charge. Total usage time from full battery on highest setting is 80 minutes.

WARNINGS:

Discontinue use if there is any discomfort for you or your partner. Do not expose device to water while charging.

WATERPROOF:

The hot & cold is waterproof to IPX7 standards and can be submerged in the bath or shower.

FRONT

Deia™

THE HOT & COLD
TEMPERATURE CHANGING
G-SPOT MASSAGER

INSTRUCTION MANUAL

OUTSIDE

POWER BUTTON

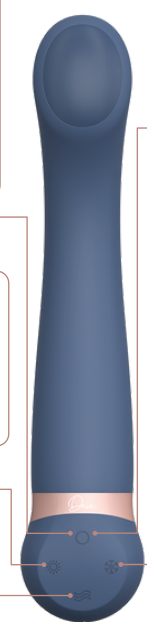
To turn the product on, press and hold power button (circle icon) for 3 seconds. The power button light will illuminate. To turn the product off, press and hold the power button (circle icon) for 3 seconds. The power button light will turn off.

HOT BUTTON

To make the g-spot tip hot, press the 'sun' button. To turn the hot setting off, press the 'sun' button again.

VIBRATION BUTTON

Press the vibration button to turn on vibrations. Then click the vibration button to toggle through the 10 vibration settings. Toggle to the end of the vibration settings to turn vibrations off.



CHARGING INDICATOR

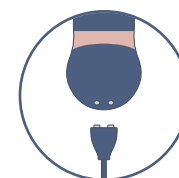
COLD BUTTON

To make the g-spot tip cold, press the 'snowflake' button. To turn the cold setting off, press the 'snowflake' button again. Cold setting will automatically turn off after 2 minutes.

CHARGING NODES

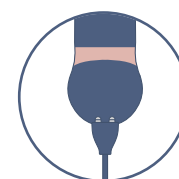
Attach the magnetic charging cable to the magnetic charging nodes on the device. Plug the other end into a 5V power source (standard mobile phone charger).

HOW TO CHARGE



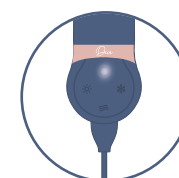
STEP 1:

Locate the two charging nodes on the charging cord and the charging nodes on the product (two small metal circles located on the bottom of the device).



STEP 2:

Line up the two charging nodes on the charging cord with the charging nodes on the product. The cord and product should magnetically attach.



STEP 3:

Plug the other end of the charging cable into a 5V power source (standard mobile phone charger). The LED light on the device will pulsate slowly to indicate charging and turn solid when fully charged.

BACK

INSIDE

Deia™

For more information:
Visit deialove.com